

U.S. Patent No. 5,410,900

Installation Instructions

SUR-LOCK I/O 2000L CONTROLLED ACCESS SECURITY DEVICE

MADE IN THE
USA 

c  US
LISTED

305
Panic Hardware

IMPORTANT

It is important that you read and follow these instructions carefully. If you are encountering difficulty installing your new I/O 2000L or are having trouble understanding any part of these instructions, please stop immediately and consult your dealer or an installation expert. Your satisfaction and your safety is important to us and we have made every effort to see that these instructions are clear and accurate.

Thank you for purchasing our products.

WARRANTY

5 YEAR PARTS ONLY WARRANTY ON MECHANICAL COMPONENTS AND HARDWARE.
1 YEAR PARTS ONLY WARRANTY ON ELECTRICAL COMPONENTS.

TOOLS NEEDED

- | | | |
|--|--|--|
| <input type="checkbox"/> 1/2" Electric Drill | <input type="checkbox"/> 7/32" Drill Bit | <input type="checkbox"/> 1/4" Drill Bit |
| <input type="checkbox"/> 9/16" Drill Bit (With 1/2" Shank) | | <input type="checkbox"/> 3/8" And 7/16" Open End Wrench |
| <input type="checkbox"/> 7/16" Deep Socket | | <input type="checkbox"/> Torx T25 Security Wrench (supplied) |
| <input type="checkbox"/> Exterior Silicon Caulk | | |

NOTE: If you will be changing the I/O 2000L to fit a right hand reverse door, the following tools will also be needed.

- 5/16" Wrench Pliers

LOCKNET

100 Courchelle Drive • Nicholasville, KY • 40356-1067
800-887-4307 • 859-887-9119 • 859-887-4958 (fax)

www.locknet.com

Doc # 1051-01

NOTE: The I/O 2000L is designed to be used with both left and right hand reverse doors and is shipped preassembled for left hand reverse doors. Always face the door from the outside when determining whether a door is left hand or right hand reverse.

STEP 1: Locate the area where the Mounting Plate will be installed. With the door closed measure 41" from the bottom of the door up the inside face of the door and make a mark. This mark will locate the top of the Mounting Plate - (Item 1). Open door and remove the door knob and striker assembly and any other items that are in the area where the Mounting Plate will be located. The striker assembly opening in the door edge will need to be covered.

STEP 2: Close the door and place the inside Mounting Plate against the door and the door jamb. **Make sure the Mounting Plate is level and aligned with the 41" mark.** Attach inside door plate to door with four of the supplied Torx screws (item 5), (see Fig. 1 to determine which four holes are used).

STEP 3: The outside mounting plate and inside mounting plate alignment must match. On the inside of door take measurements to ensure proper alignment of inside and outside mounting plates and secure outside mounting plate with six (6) Torx self drilling screws (item 5). See Fig. 1 Steps 3&4.

STEP 4: Using the 1/4" drill bit, drill five square holes, in respective shaded areas, completely through the door, taking care to drill holes **straight** through door so that the holes in the outside and inside plates lineup. See Fig. 1, Steps 3&4.

If it is necessary to change the I/O 2000L from left hand reverse to right hand reverse see diagram at top of next page. Remove the lock bolt assembly and the battery bracket assembly from the I/O 2000L. Re-attach the battery bracket assembly and lock bolt assembly on the opposite side. **Be sure to secure battery wire lead with plastic clip.**

NOTICE

The I/O 2000L is preset during manufacturing to meet specified code compliance. Any alteration or re-adjustment of internal operational components other than adjusting the Lock Bolt Rod (step 6 on installation instructions) may void all code compliance.

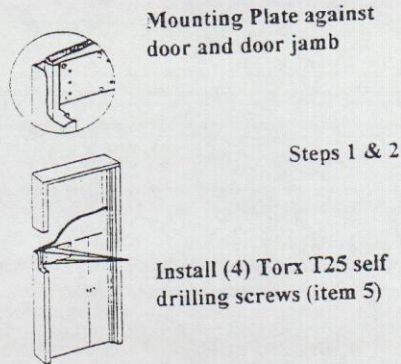
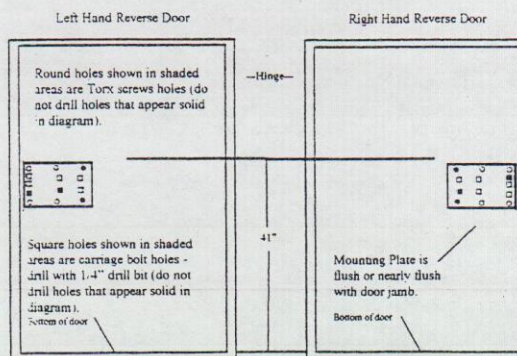
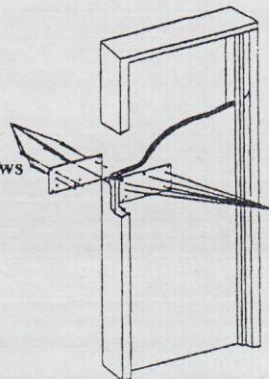


Fig. 1
Inside View

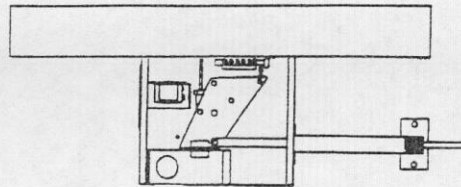
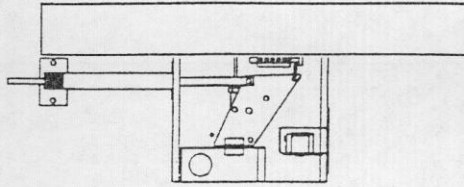


Steps 3 & 4

Mount Outside plate using (6) Torx self drilling screws (item 5)

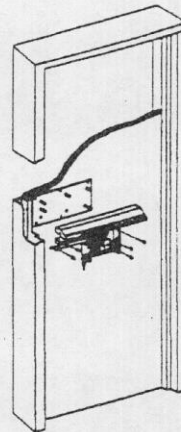


Drill (5) 1/4" holes straight through door



STEP 5: Mount the LO 2000L (items 2) to the inside plate using the five carriage bolts (item 4, Fig. 2) and the five lock nuts supplied (item 6). **CAUTION: DO NOT OVERTIGHTEN BOLTS. THIS MAY CAUSE THE DOOR TO BOW.**

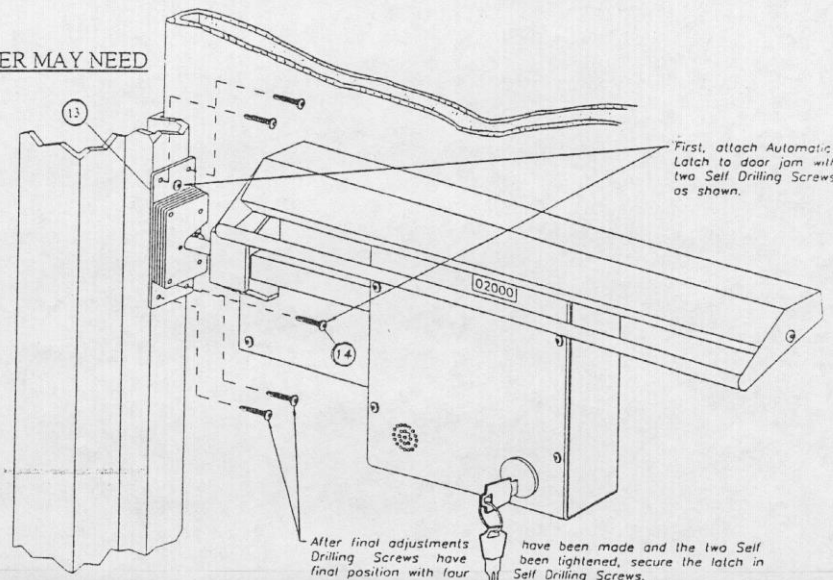
STEP 6: Keeping the door closed, check the distance of the lock bolt rod from the door jamb stop. The lock bolt rod should just clear the stop. If necessary adjust the lock bolt rod by loosening the jam nut (see fig. 3) at the end inside the box and turn the lock bolt rod as needed to obtain the proper clearance. **Tighten the jam nut securely!**



Mount the body to inside plate using (5) five of the lock nuts and carriage bolts supplied. Caution do not over tighten nuts.

STEP 7: With the door closed slide the latch (item 13) over the lock bolt rod making sure door latches. Mark around outside of latch, open door, remove paper backing from the adhesive tape on back of latch and position latch on jamb aligning with marks. Attach latch to jamb through (2) two slotted holes with supplied Torx self drilling screws (item 14). Make final adjustments so door closes and locks securely. Tighten screws. Secure latch in final position by installing (4) four corner holes with Torx self drilling screws (item 14).

NOTE: DOOR CLOSER MAY NEED TO BE ADJUSTED



First, attach Automatic Latch to door jamb with two Self Drilling Screws as shown.

After final adjustments have been made and the two Self Drilling Screws have been tightened, secure the latch in final position with four Self Drilling Screws.

STEP 8: To install hinge side dead bolt (item 9, Fig. 2) follow the instructions printed on dead bolt installation template.

STEP 9: Install the 9 volt battery, connect wire from switch on cover plate (item 3) to circuit board (Caution: take care not to damage circuit board) while holding cover plate in place on lock. (**Key should not be in lock position**) wait 15 to 20 seconds then open door. The alarm will sound. The alarm will continue to sound until key is turned to off position. Check for proper operation of the I/O 2000L according to the operation procedure printed on cover label.

STEP 10: Rotate the knob on the left side of the counter until the counter reads all zeroes. Place the cover (item 3) on the lock and secure with Torx sharp point screws (item 6) install dead bolt cover (item 10) (refer to drawing below) with Torx sharp point screws (item 6).

NOTICE: On the I/O 2000L the alarm is set 15 to 20 seconds after the key is removed from lock.

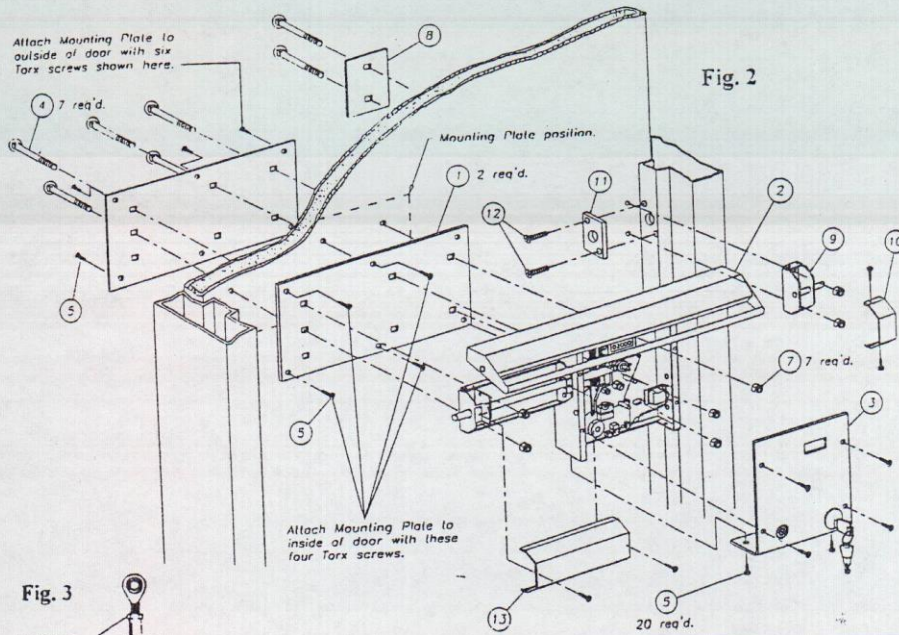
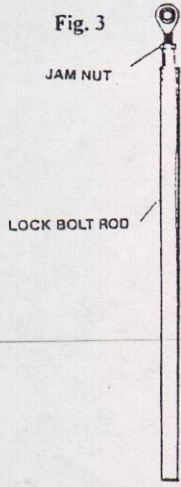
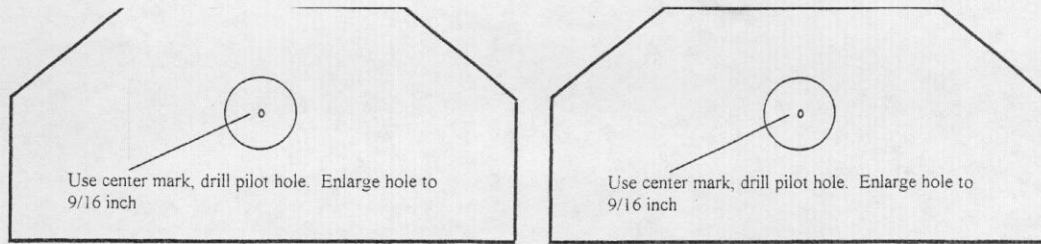


Fig. 3



ITEM	QTY.	PART NO.	DESCRIPTION
01	2	3005-01-13	MOUNTING PLATE
02	1	2001-03	ALARM ASSEMBLY
03	1	2036-02-13	ALARM COVER ASSEMBLY
04	7	8001-01-55	CARRIAGE BOLT; 1/4-20 X 2 1/2"
05	20	8417-01-55	#10 X 1/2" SELF DRILLING TORX SCREW
06			
07	7	8003-01-51	NYLON INSERT LOCK NUT; 1/4-20
08	1	3007-01-13	BOLT MOUNTING PLATE
09	1	3109-01-13	HINGE SIDE DEAD BOLT
10	1	3110-01-13	DEAD BOLT COVER
11	1	3009-01-51	BOLT PLATE
12	2	8005-01-51	#10-24 X 1" SELF DRILLING SCREW (DRIL-KWICK)
13	1	3236-01-13	LOCK BOLT HOUSING COVER
14	1	2005-01-55	LATCH ASSEMBLY
15	6	8419-01-55	#10 X 3/4" SELF DRILLING TORX SCREW
16	1	7901-01	EMERGENCY EXIT DECAL
17	1	7902-01	WARRANTY CARD
18	1	2000-ASSY	ASSEMBLY INFORMATION SHEET
19	1	7020-01	CARDBOARD BOX for SECURITY LOCK
19			

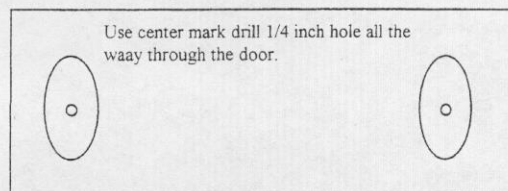
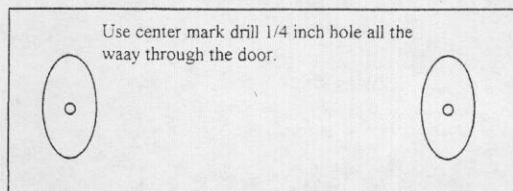


Fold on this line for center hole location

Fold on this line for center hole location

Use this template for left hand reverse door

Use this template for right hand reverse door



This edge against door at 39 1/2 inch mark

This edge against door at 39 1/2 inch mark

Hinge side dead bolt template

Installation instructions for Passive dead bolt

Step 1: with the door closed, measure from the bottom of the door up 39 1/2 inches make a mark use this mark to locate the top edge of this paper template.

Step 2: fold the template on the solid line. Place the template against the door and the doorjamb on the inside of door on the hinge side at the 39 1/2 inch mark made in the previous step. Use center punch transfer (2) two center marks to the Door and (1) one-center mark to the doorjamb.

Step 3: Use the center punch marks made on door drill (2) two 1/4 inch holes in the door all the way through the door making sure that the holes are drilled level. Drill small pilot hole in doorjamb using the center punch mark; enlarge pilot hole with 9/16-inch drill bit.

Step 4: From outside of door install dead bolt mounting plate (item 8) using (2) two 1/4 inch carriage bolts (item 4) push bolts through plate and door (fig.2) install dead bolt (item 9) on 1/4 inch bolts, secure with lock nuts (item 7) remove the backing paper from the back of lock plate (item 11) and position the lock plate so that it is aligned with the 9/16 inch hole in the doorjamb, with the plate held in place by tape, close the door to check the alignment of the lock plate and lock bolt rod making sure the lock bolt rod moves in and out of the hole freely. **Note the lock bolt rod should penetrate the bolt plate 1/2 inch.** Once alignment is correct secure the lock bolt plate to doorjamb with (2) two self-drilling screws (item 12). Open and close door making sure the door operates freely (**enlarge hole if necessary**).